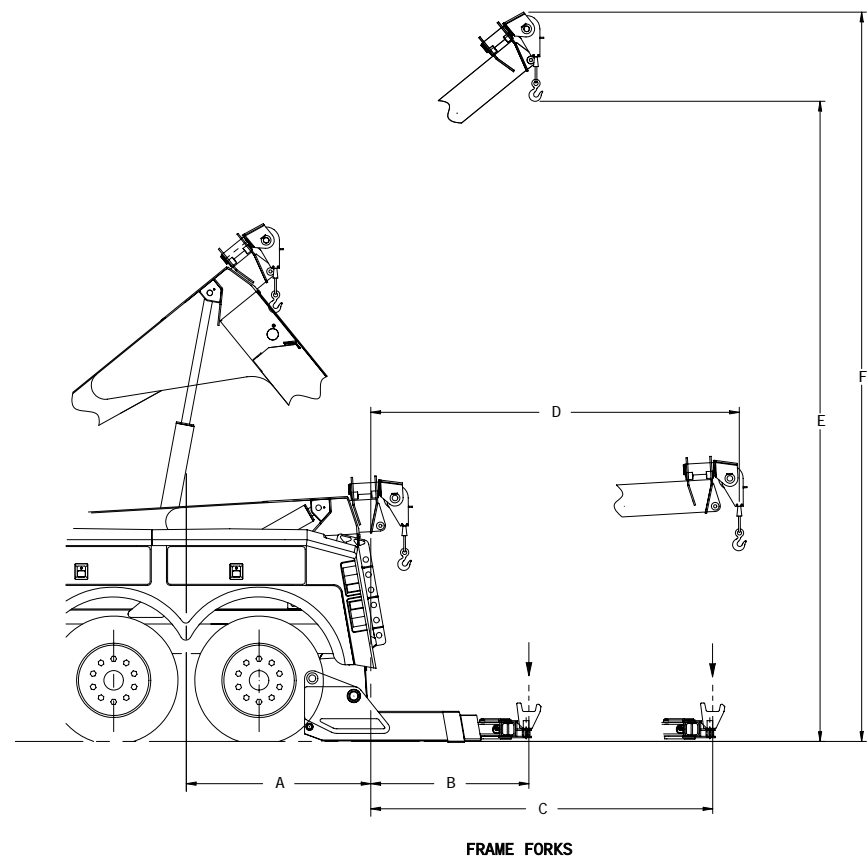


50 TON INTEGRATED SPECIFICATIONS DIAGRAM

DWG NO
5-836-000076 REV
00



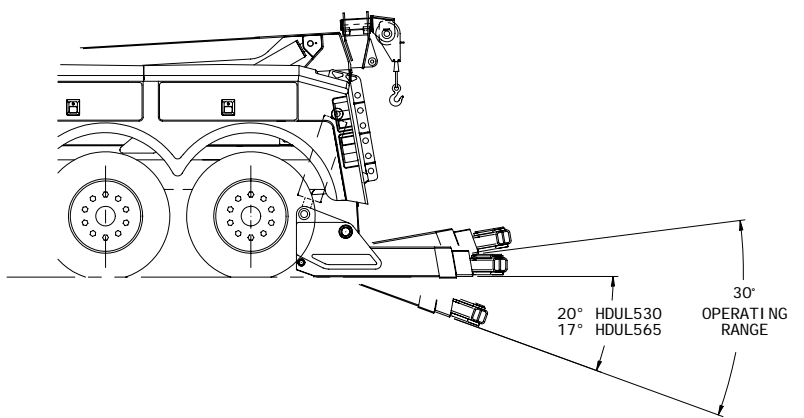
SPECIFICATIONS

	INCHES	RATING
A. Centerline of Rear Tandem to Rear of Tailboard	66"	
B. Reach with Forks, retracted (rear of tailboard to centerline of forks)		
Standard Underlift - HDUL530	72"	53,000 lbs
Coach Underlift - HDUL565	87"	56,500 lbs
C. Reach with Forks, extended (rear of tailboard to centerline of forks)		
Standard Underlift - HDUL530	142"	17,000 lbs
Coach Underlift - HDUL565	181"	17,600 lbs
E. Boom Reach Off Rear of Tailboard (boom @ 0°)		
Standard - 2 Section Boom	178"	
Optional - 3 Section Boom	TBD"	
F. Boom Working Height to Hook (boom @ 40°)		
Standard - 2 Section Boom	295"	
Optional - 3 Section Boom	TBD"	
G. Boom Maximum Boom Height (boom @ 40°)		
Standard - 2 Section Boom	329"	
Optional - 3 Section Boom	TBD"	

BOOM LIFT RATINGS (SAE J2512)

Standard - 2 Section Boom	
Boom Retracted @ 30°	100,000 lbs
Boom Extended @ 30°	30,000 lbs
Optional - 3 Section Boom	
Boom Retracted @ 30°	100,000 lbs
Boom Mid Extended	TBD lbs
Boom Extended @ 30°	TBD lbs

Note: All values are based on a 42" truck frame height and rounded to the nearest inch. Values are subject to change without notice.



FRAME FORKS

JERR-DAN <small>An Oshkosh Corporation Company</small>		SHEET 1 OF 1
TITLE 50 TON INTEGRATED SPECIFICATIONS DIAGRAM		WEIGHT #
SCALE N.T.S.	DATE 11/24/08	REV 00
DRAWN KDH	DATE 11/24/08	REV 00

THIS DRAWING AND SUBJECT MATTER CONTAINED HEREIN ARE THE SOLE AND EXCLUSIVE PROPERTY OF JERR-DAN CORPORATION. THIS COPY IS LOANED TO THE SUBSCRIBER UNDER THE CONDITION THAT IT OR THE SUBJECT MATTER CONTAINED HEREIN SHALL NOT BE DISCLOSED TO ANY OTHER PARTY WITHOUT THE EXPRESS WRITTEN PERMISSION OF JERR-DAN CORPORATION. ACCEPTANCE OF THIS COPY SHALL BE CONSIDERED AS ACCEPTANCE OF THE FOREGOING CONDITIONS.

IF IN DOUBT ASK. DO NOT SCALE DRAWING. REMOVE ALL BURRS AND SHARP CORNERS.

TOLERANCES UNLESS OTHERWISE SPECIFIED:
2 PLACE DEC AD DIMS
3 PLACE DEC AD DIMS
H/A TO MATERIAL THICKNESS

REV	DATE	DESCRIPTION	BY	APP

8 7 6 5 4 3 2 1